

IL National Conference 2023

Developing a Sustainable Professional Learning Culture in your School

Friday 24th & Saturday 25th February 2023

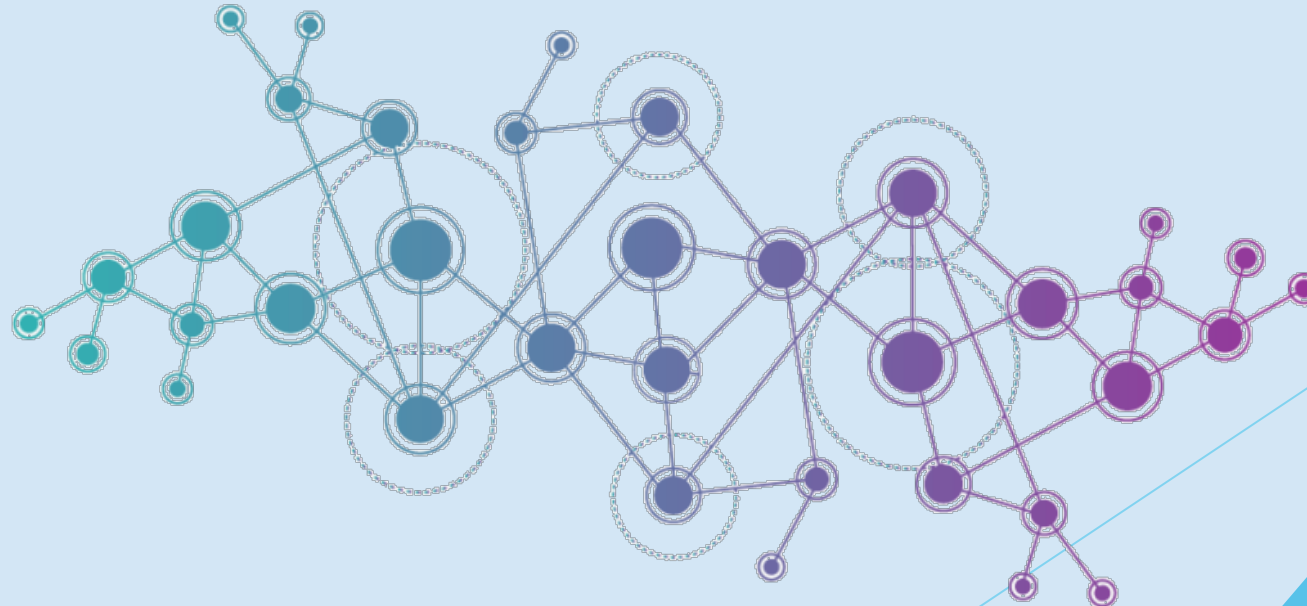
Coaching in Education

Collegial Partnership Coaching



UCC

University College Cork, Ireland
Coláiste na hOllscoile Corcaigh



INSTRUCTIONAL
LEADERSHIP
programme



etbi
Education and Training
Boards Ireland
Boird Oideachais agus
Oiliúna Éireann

Introduction

Collegial Partnership Coaching (CPC)

Presented by:

Joseph A. Moynihan, PhD: University College Cork

&

Coran Swayne: Brooklodge NS, Glanmire, Co. Cork





A brief Mentimeter activity

Activity #1

COACHING

Which two words
come to mind when
you first think of
coaching?



Collegial Partnership Coaching

*A model of coaching in education that supports individuals, across the school community, to develop and grow deep and trusting **partnerships** with their colleagues as they navigate their professional learning journey together through formal and informal conversations around their own educative practice and that of their learning partners.*

(Moynihan & Swayne, 2022)





Conceptual and Theoretical Framework *for the Emerging Model of CPC in Irish Schools*

Peer Coaching (Showers & Joyce, 1996)

- On Site
- Focused on practice

Coaching For Performance (Whitmore, 2017)

- **GROW** Framework
- Conveyance

Cognitive Coaching (Costa & Garmston, 2016)

- Self-Directed Learning
- Lifelong Learning

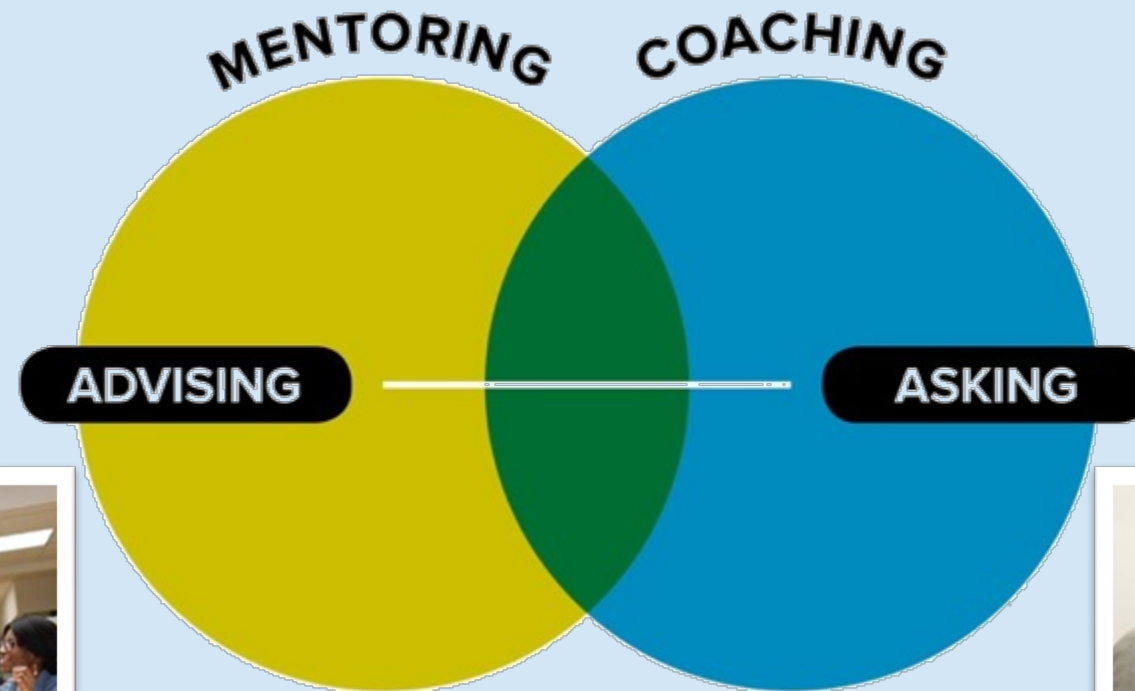
Instructional Coaching (Knight, 2021)

- Partnership Principles
- Relational and connected

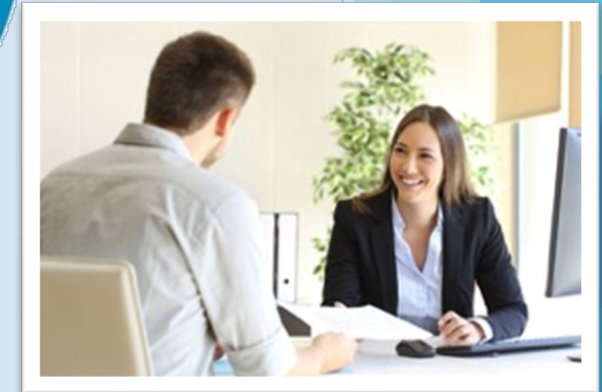
Solution-Focused Approach (Grant & Cavanagh, 2018)

- Conversational tools
- Constructive Dialogue

Mentoring and Coaching



Coaching is ultimately about raising awareness in the coachee





Activity #2



‘What would you like to talk about?’

‘What would you like to talk about?’

Let’s consider that question...

1. Quietly think about it for a minute or two
2. Then write down what you might wish to **talk about with a coach** in relation to your own practice
3. Finally, have a brief discussion with the person beside you about why you chose that topic



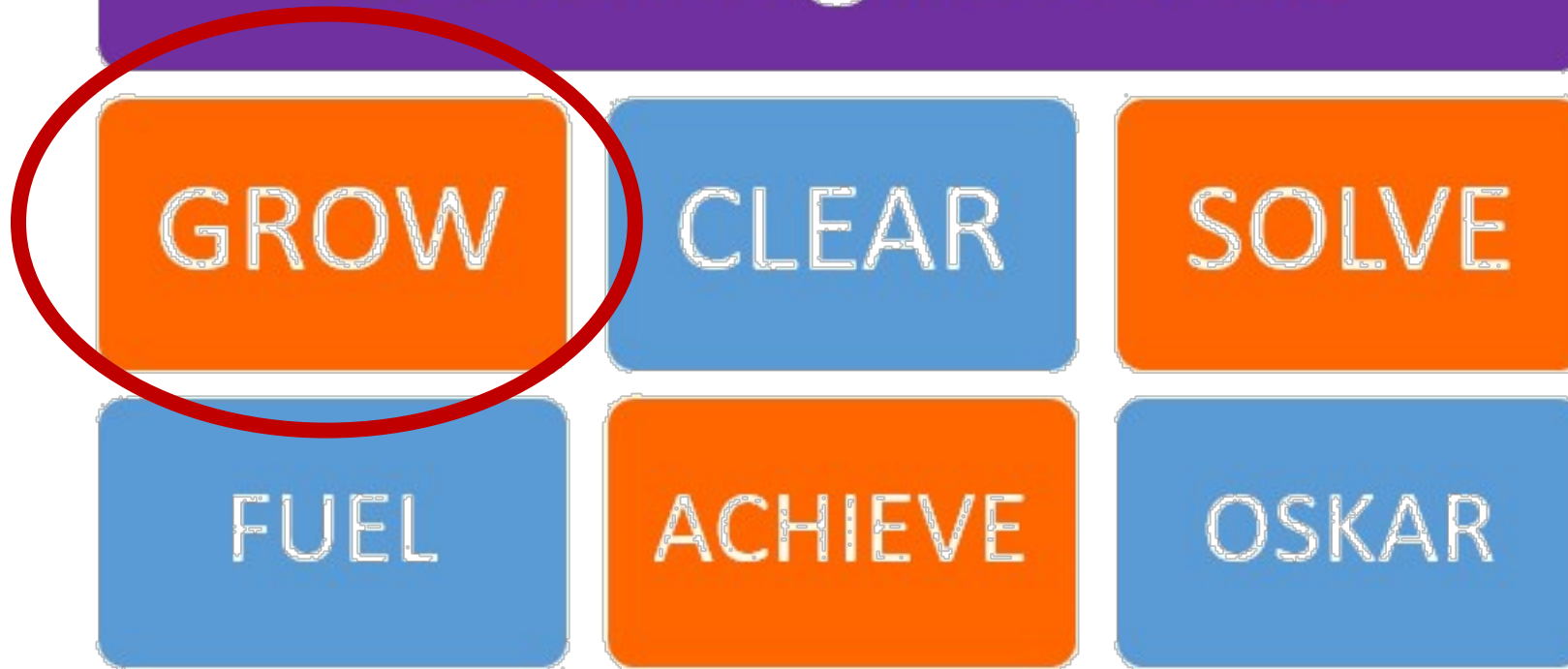
Any questions so far?



IL National Conference 2023

Developing a Sustainable Professional Learning Culture in your School

Coaching Models



Whitmore's GROW Model is widely used and is very accessible

Whitmore's GROW Model

GROW - a coaching model



IL National Conference 2023

Developing a Sustainable Professional Learning Culture in your School



Collegial Partnership Coaching

It's already time for some

Coaching

In groups of 3

1. One Coach
2. One Coachee
3. One Observer





FEEDBACK

How was that experience for you?

Any final questions?



IL National Conference 2023

Developing a Sustainable Professional Learning Culture in your School

Collegial Partnership Coaching



Dr Joe Moynihan

joseph.moynihan@ucc.ie

Coran Swayne

coran.swayne@gmail.com

THE
END